



*Incheney - Rutland Country Club*

*Rutland Historical Society*

Spectators watching the putting at a late 1920s tournament.



*Frank Hinchey - Rutland Country Club*

*Rutland Historical Society*

All eyes on the putt at a late 1920s tournament.



*Frank Hinchey - Rutland Country Club*

*Rutland Historical Society*

Dr. Alberic Bellrose leaning on his club watching his opponent's putt.



*Frank Hinchey - Rutland Country Club*

*Rutland Historical Society*

Only a few in golfing attire at this meeting on the course.



*Frank Hinchey - Rutland Country Club*

*Rutland Historical Society*

Putting is the attraction here.



*Frank Hinchey - Rutland Country Club*

*Rutland Historical Society*

Crowd admires the hit of Dr. Alberic Bellrose. Perhaps he will win the tournament.



*Frank Hinchey - Rutland Country Club*

*Rutland Historical Society*

18th Hole - Jacket, tie, and knickers are the proper attire.



*Frank Hinchey - Rutland Country Club*

*Rutland Historical Society*

Hand shake before or after play - women's golf attire 1920s.





Going to the Clubhouse



*Frank Hinchey - Rutland Country Club*

*Rutland Historical Society*

Putting practice before the game.



*Frank Hinchey - Rutland Country Club*

*Rutland Historical Society*

Viewing the tournament.



*Frank Hinchey - Rutland Country Club*

*Rutland Historical Society*

Dr. Alberic Bellrose (holding club on his shoulder) and teammates watching the putt.



*Frank Hinchey - Rutland Country Club*

*Rutland Historical Society*

Looks like a good shot for Pierce Russel.



*Frank Hinchey - Rutland Country Club*

*Rutland Historical Society*

Club Pro, Jim Murray, on the far left



*Frank Hinchey - Rutland Country Club*

*Rutland Historical Society*

Hitting out of the trap - possibly Pierce Russell

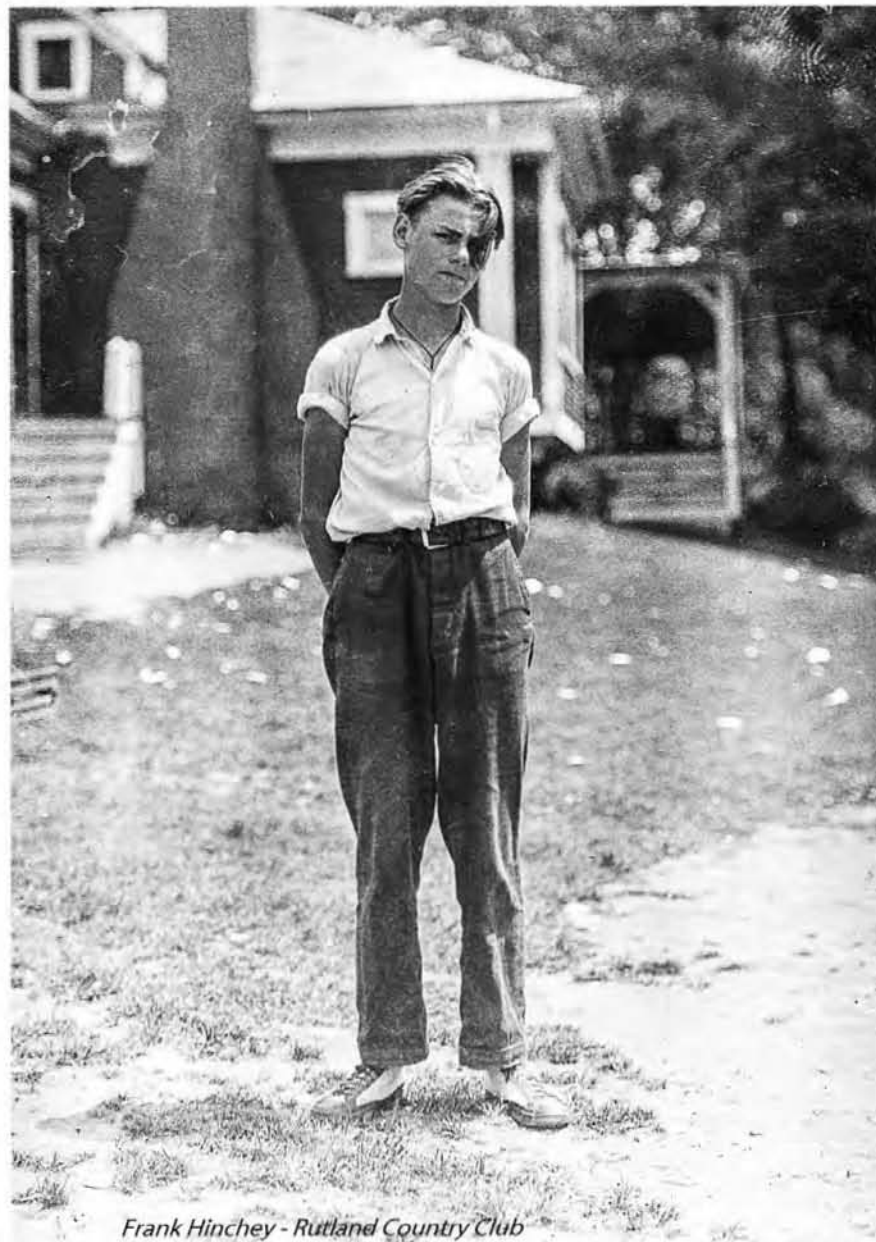


*Frank Hinchey, Rutland Country Club*

*Rutland Historical Society*

L to R Maurice Bellerose, unknown, Pierce Russell, Tom Pierce





*Frank Hinchey - Rutland Country Club*

Caddy. See <https://archive.org/details/RutlandHistoricalSocietyQuarterlyVol.31No.12001>



*Frank Hinchey - Rutland Country Club*

*Rutland Historical Society*

Caddies: see <https://archive.org/details/RutlandHistoricalSocietyQuarterlyVol.31No.12001>



Caddies waiting for work.



*Frank Hinchey - Rutland Country Club*

Caddy - see <https://archive.org/details/RutlandHistoricalSocietyQuarterlyVol.31No.12001>



*Frank Hinchey - Rutland Country Club*

Caddy Chums. See <https://archive.org/details/RutlandHistoricalSocietyQuarterlyVol.31No.12001>



*Frank Hinchey - Rutland Country Club*

*Rutland Historical Society*

Caddies hanging out towels and taking a rest while waiting for loops. (once around the course)



*Frank Hinchey - Rutland Country Club*

*Rutland Historical Society*

Gathering before or after an event.



*Frank Hinchey - Rutland Country Club*

*Rutland Historical Society*

Checking pairings or scores.





*Frank Hinchey - Rutland Country Club*

*Rutland Historical Society*

Two golfers have just hit their tee shots. A swinging bridge across East Creek and a tractor/mower of the 1920s-30s.



*Frank Finckley - Rutland Country Club*

*Rutland Historical Society*

Swinging bridge across East Creek. In background, the green superintendent's residence and maintenance barn.



*Frank Hinchey - Rutland Country Club*

*Rutland Historical Society*

Frank's brother, Fred, made a hole-in-one on this hole in the 1960s. View from the current clubhouse.



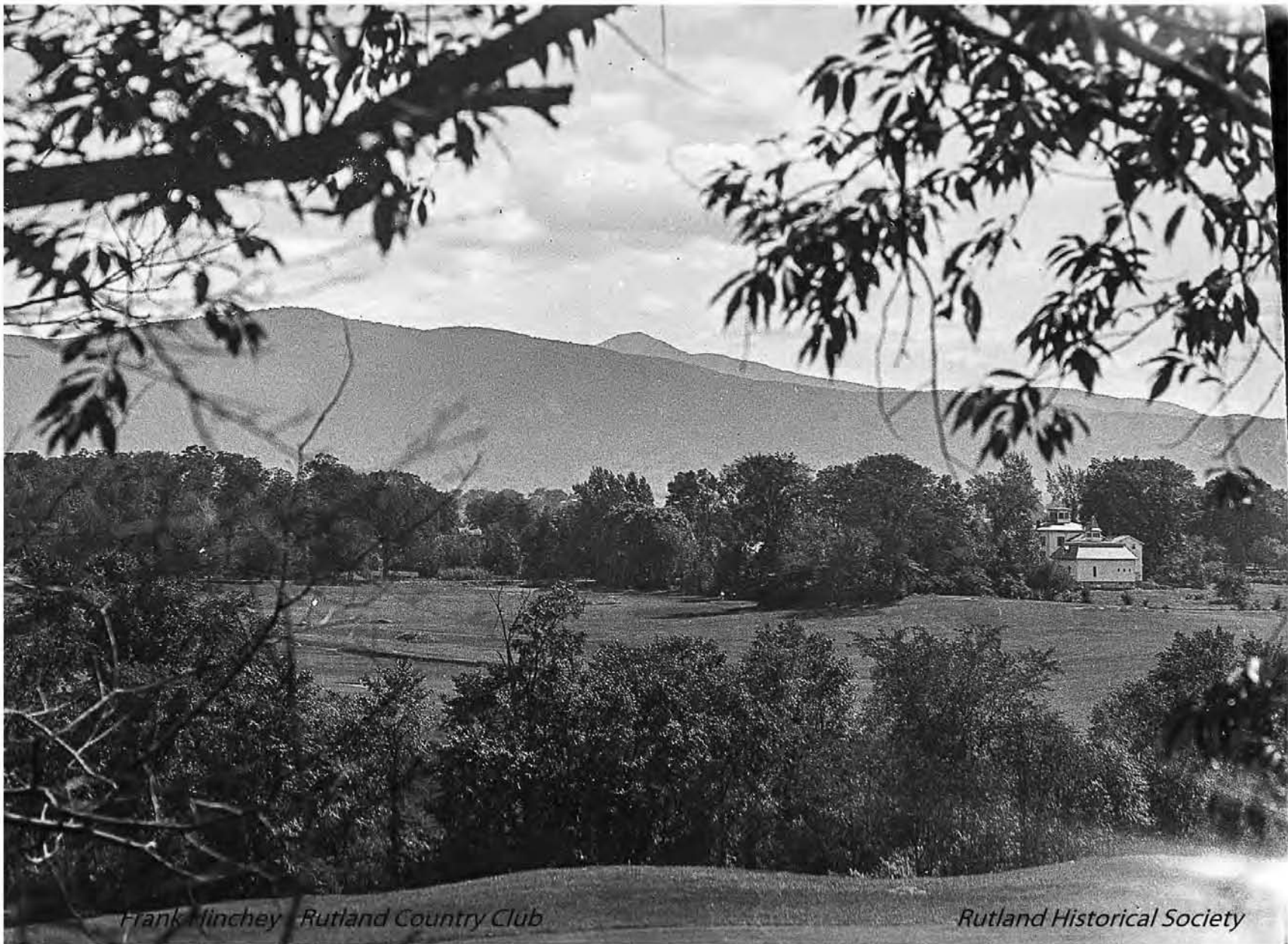
In the distance the No.10 green. Nearby is the so-called blue hole where caddies would swim on hot days.



*Frank Hinchey - Rutland Country Club*

*Rutland Historical Society*

View across the 13th hole, looking east toward the front nine.



*Frank Minchey Rutland Country Club*

*Rutland Historical Society*

On the right is the Clement house, which still stands today, on the northwest corner of Grove and Field Ave.



*Frank Hinchey - Rutland Country Club*

*Rutland Historical Society*

The house is at the southeast corner of Grove St. and Field Ave. The porticos can still be seen today.



*Frank Hinchey - Rutland Country Club*

*Rutland Historical Society*

Aerial view of Rutland Country Club





*Frank Hinchey - Rutland Country Club*

*Rutland Historical Society*

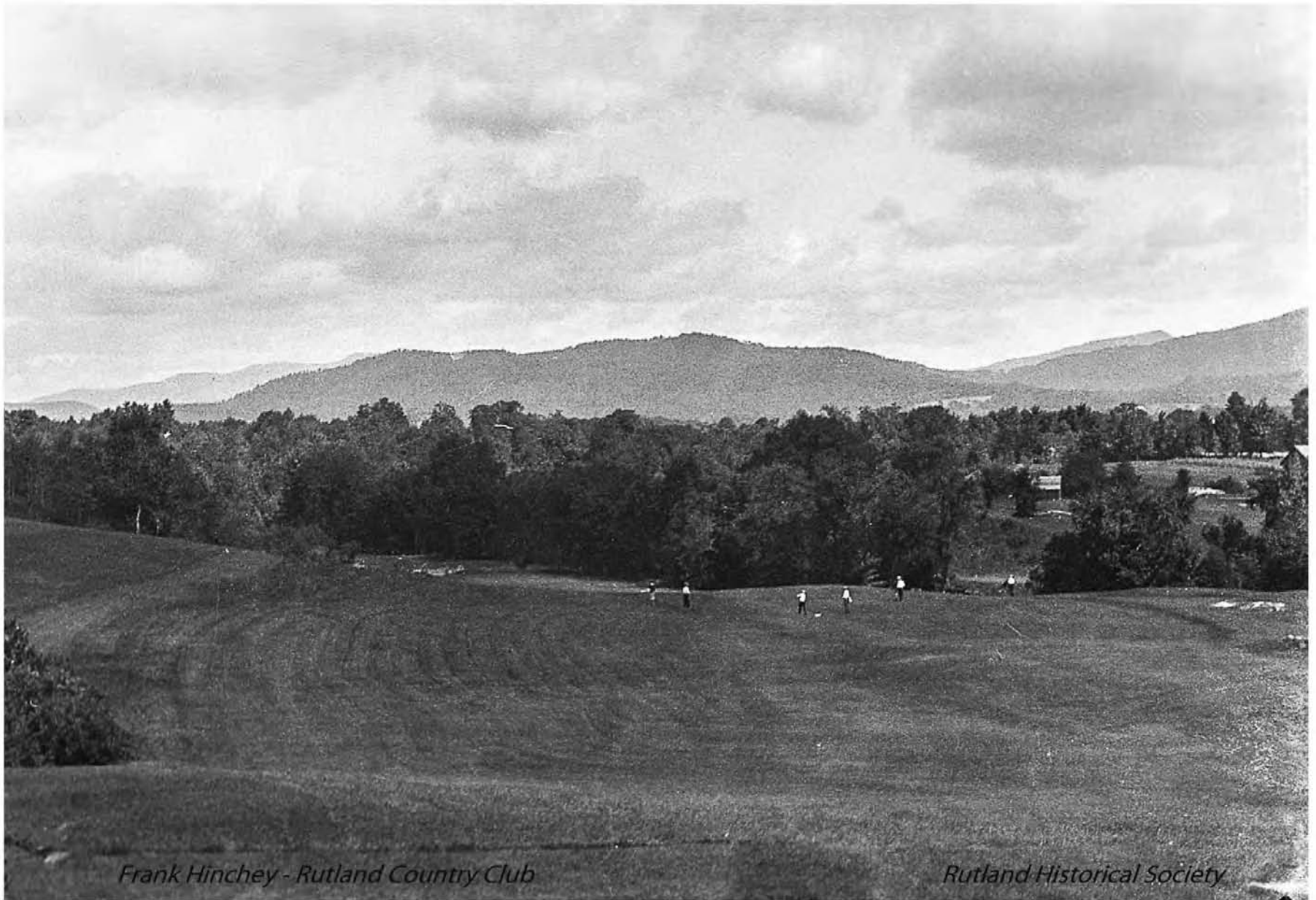
Hole 4 is the number 1 handicap hole. No. 3 green would be to left. The view is south.



*Frank Hinchey - Rutland Country Club*

*Rutland Historical Society*

Par-3 No. 15. John McDonough's hole-in-one on this hole was witnessed by his caddy, Frank, son of the photographer.



*Frank Hinchey - Rutland Country Club*

*Rutland Historical Society*

Hole 6 is a downhill par 4. The structures to the right background are maintenance buildings.



*Frank Binchey - Rutland Country Club*

*Rutland Historical Society*

View looking south of Hole 13, a downhill par 3 with a deep bunker left of green.



The structures to right background are maintenance buildings, maybe part of clubhouse.



*Frank Hinchey - Rutland Country Club*

*Rutland Historical Society*

Can you identify this spot?



*Frank Hinchey - Rutland*

This house appears to be the one on the southeast corner of Grove Street and Field Avenue.



*Frank Hinchey - Rutland Country Club*

*Rutland Historical Society*

Clubhouse in the summer.





*Frank Hinchey - Rutland Country Club*

*Rutland Historical Society*

Clubhouse in the summer.



*Frank Hinchey - Rutland Country Club*

Picture says it all.



Dr. Alberic Bellerose on the right. Can you identify the man on the left?



*Frank Hinchey - Rutland Country Club*

Can you identify this man?



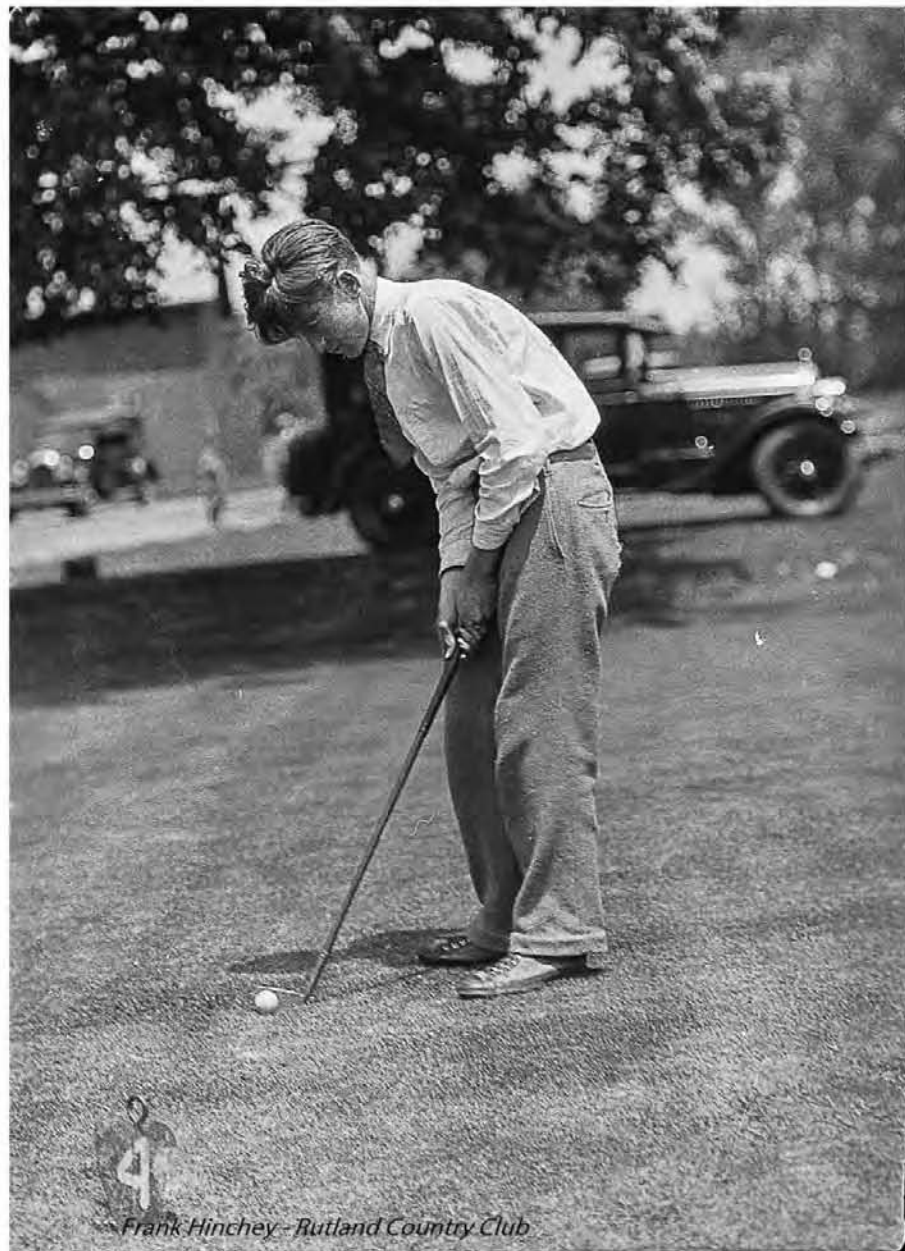
*Frank Hinchey - Rutland Country Club*

Can you identify this man?



Frank Hooley - Reuters/Corbis

Can you identify this man?



Can you identify this young man?



*Frank Hinchey - Rutland Country Club*

Do you know this man?





Club Pro, Jim Murray, from golf country, Carnousti, Scotland, came to the Rutland Country Club in 1928.



*Frank Hinchey - Rutland Country Club*

Club Pro, Jim Murray



*Frank Hinchey - Rutland Country Club*

*Rutland Historical Society*

Virginia Pierce-Smith won the VT Amateur Championship at the age of 22. The Virginia Pierce-Smith Invitational is still held.



*Frank Hinchey - Rutland Country Club*

Tom Pierce won his first Vermont Championship at the age of sixteen.



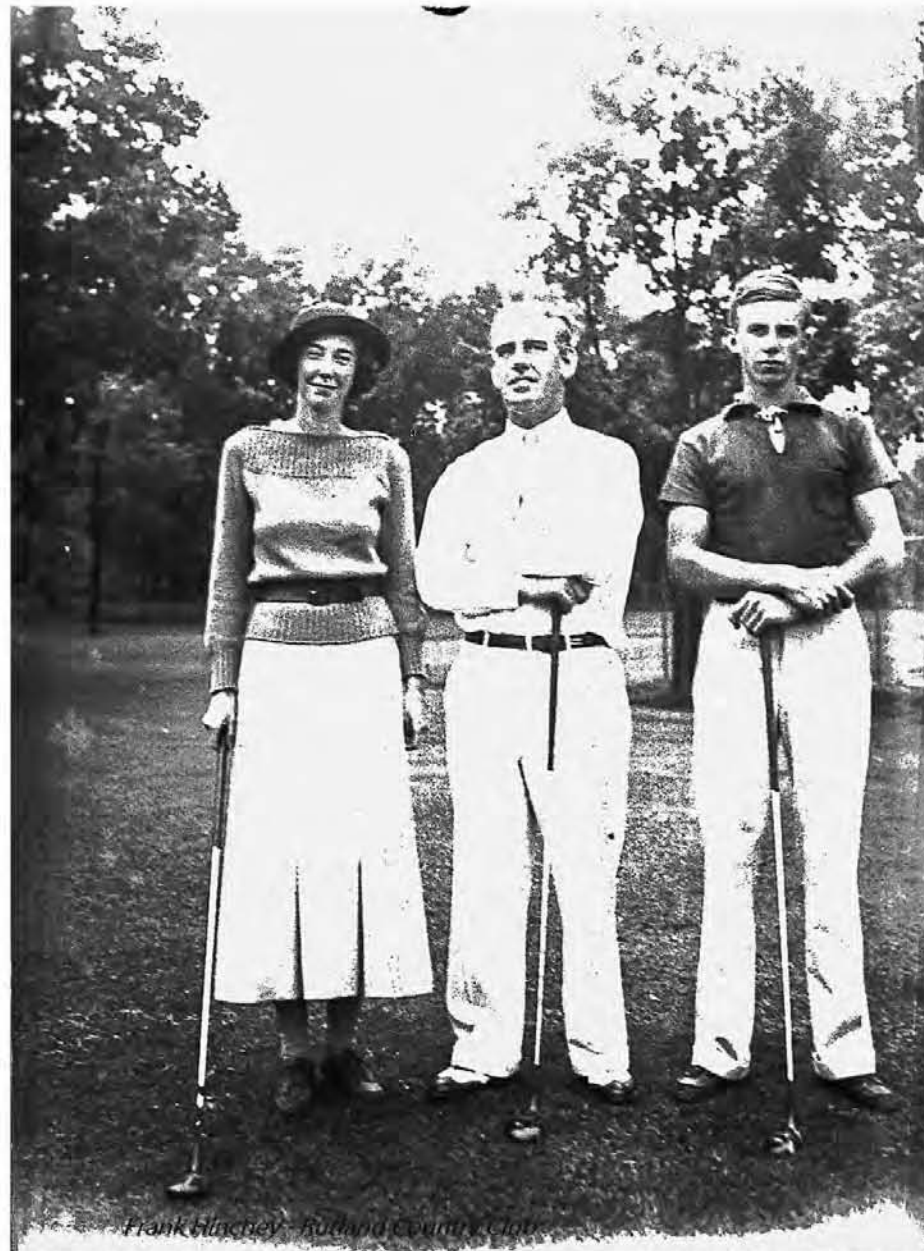
*Frank Hinchey - Rutland Country Club*

*Rutland Historical Society*

Tom Pierce and his Sister, Virginia Pierce-Smith. Both were prominent amateur golfers.



Virginia Pierce-Smith, her father, "Les" Pierce, and her brother, Tom. The annual L. D. Pierce Tournament is named after Les.



L to R Virginia Pierce-Smith, Jim Murray (club pro), Tom Pierce



*Frank Hinchey - Rutland Country Club*

*Rutland Historical Society*

L to R Tom Pierce, Jim Murray (club pro), Virginia Pierce-Smith





*Frank Fitzhugh, Rutland Country Club*

*Rutland Historical Society*

Left to Right: Unknown, Dr. Maurice Bellerose, Pierce Russell, Tom Pierce



Young Tom Pierce at the Rutland Country Club



*Frank Hinchey - Rutland Country Club*

Virginia Pierce-Smith.



*Frank Hinchey - Rutland Country Club*

Virginia Pierce-Smith demonstrating her swing.

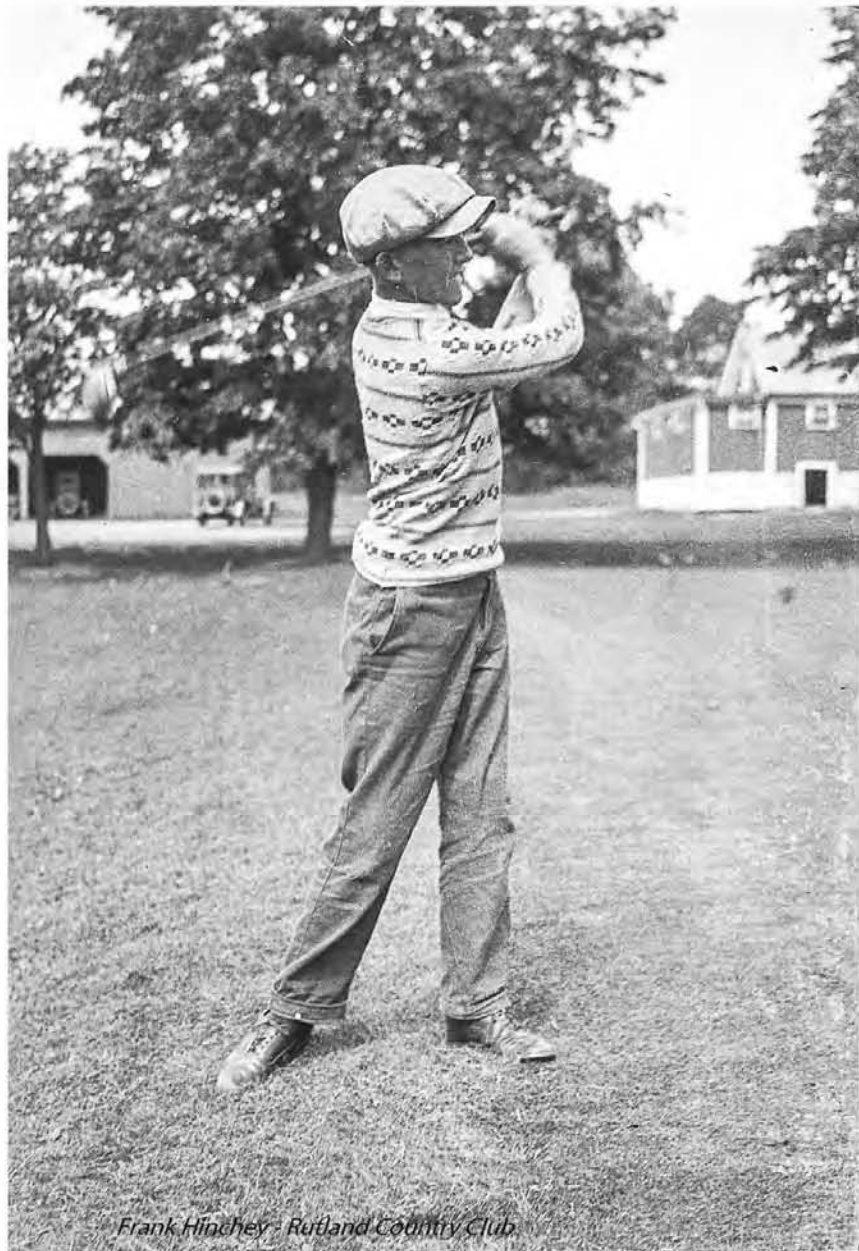


Can you identify this golfer hitting out of the rough?



Frank Hitchcock - Rutland Country Club

Up on toes for extra distance. Can you identify this golfer?



*Frank Hinchey - Rutland Country Club*

Can you identify this young golfer?



Who is this boy?





*Frank Hinchey - Rutland Country Club*

Who is this young boy?



*Frank Hinchey - Rutland Country Club*

*Rutland Historical Society*

Can you identify this man?



*Frank Hinchey - Rutland Country Club*

Getting ready for play at the First Hole is the photographer's brother, Fred Hinchey, on the right.



*Frank Hinchey - Rutland Country Club*

*Rutland Historical Society*

Dr. Alberic Bellerose - center. Can you identify the other men.



*Frank Hinchey - Rutland Country Club*

*Rutland Historical Society*

Dr. Alberic Bellerose - center. Can you identify the other men.



*Frank Hinchey - Rutland Country Club*

*Rutland Historical Society*

Jim Murray (club pro) on far left. Can you identify the other golfers?



*Frank Hinchey - Rutland Country Club*

*Rutland Historical Society*

George Smith at the Rutland Country Club



Frank Hinchey, playing golf rather than taking the picture.





*Frank Hinchey - Rutland Country Club*

From the left, Walter Hagen, Jim Murray (club pro), George Morse, Billie Pond



*Frank Hinchey - Rutland Country Club*

Dr. Maurice Bellerose



*Frank Hinchey - Rutland Country Club*

George Smith (back) at the Rutland Country Club



*Frank Hinchey - Rutland Country Club*

Frank Hinchey (photographer) at the Rutland Country Club



*Frank Hinchey - Butland Country Club*

Tom Pierce



*Frank Hiney - Rutland Country Club*

Carl Olney



*Frank Hinchey - Rutland Country Club*

*Rutland Historical Society*

Carl Olney (L) and Dr. Alberic Bellrose



*Frank Hickey - Rutland Country Club*

John Canney





*Frank Hinchey - Rutland Country Club*

*Rutland Historical Society*

Clubhouse in Winter.



*Frank Hinchey - Rutland Country Club*

*Rutland Historical Society*

Clubhouse in Winter.



*Frank Hinchey - Rutland Country Club*

*Rutland Historical Society*

Clubhouse in Winter.